

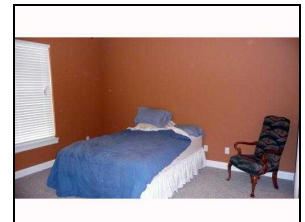
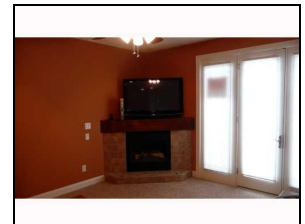
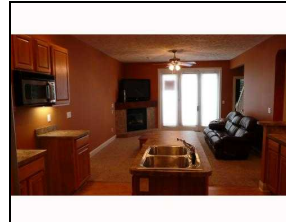
## Another Fine Property...

**Presented by:** Tracy Snyder  
C B Hubbell BriarWood-E.L.  
[tracysnyder@comcast.net](mailto:tracysnyder@comcast.net)  
[www.tracysnyderteam.com](http://www.tracysnyderteam.com)  
Agent Phone: 517-402-6544

302 Rivers Edge Unit 10, Portland 48875

\$ 169,900

ML#: 190603



Property Class: Condominium

Property Type: Two Story

Bedrooms: 3

Full Baths: 2

SqFt: 1,661

Basement: Slab

Garage: Two Car, Attached, Door Opener

Amenities: Underground Sprinklers

School: Portland 65

Year Built: 2006

Rooms: 6

Half Baths: 1

Taxes: \$3,524

Tot # Units: 12

Monthly Fee: \$112

Fee Includes: Trash Removal

Public Rem: Located right on the Grand River in the "Cool City" of Portland! Open floor plan, gas fireplace, 1st floor master suite with river views. Go up the lighted stairway and you will find 2 more bedrooms & 1 bath.